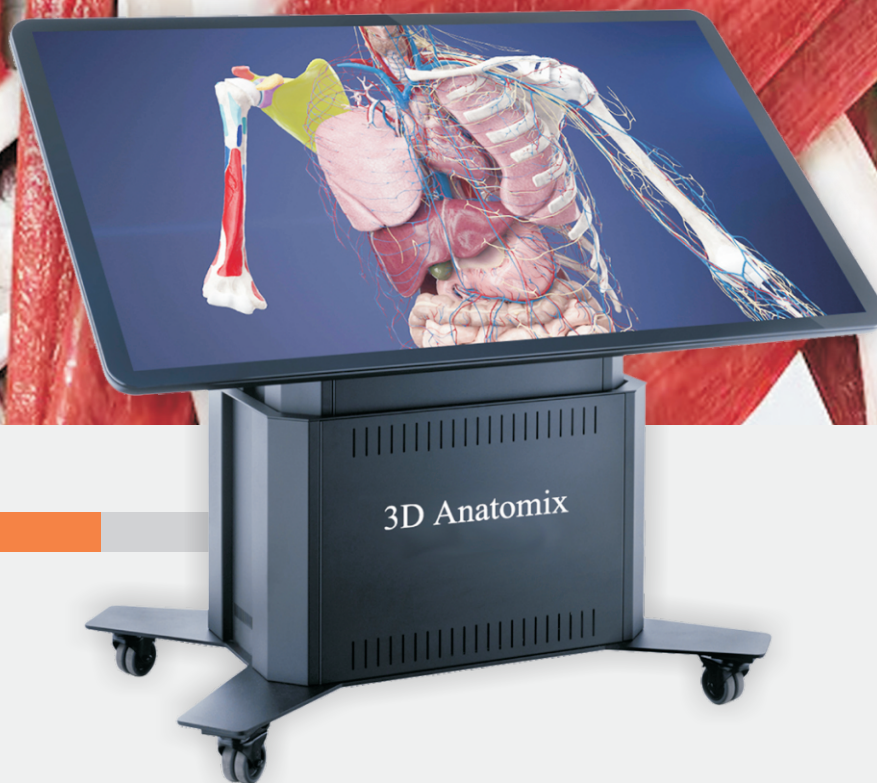


# 3D Anatomix **TABLE**



# 3D Anatomix TABLE

The 3D Anatomix Table revolutionizes medical education with an immersive 3D learning experience.

Combining a high-performance anatomy system and a large touchscreen, it enables interactive exploration of real anatomical data, accessible on-site or remotely.

Suitable for all educational levels, it offers detailed 3D visualization, allowing users to peel layers, zoom, and isolate structures to understand spatial relationships.

Integrated clinical imaging supports surgical demonstrations and pathology illustrations, enhancing medical training for healthcare careers.



MED  
SCHOOLS



NURSING  
SCHOOLS



COLLEGES



TEACHING  
HOSPITALS



MUSEUMS



SIMULATION  
CENTRES



OSTEOPATHY  
SCHOOLS



PHYSIOTHERAPY  
SCHOOLS



LIBRARIES



MED  
COMPANIES





# Applications

## Lab Activities

### VIRTUAL DISSECTION

- Allows for limitless dissections without worrying about mistakes
- Visualize internal anatomy and physiological reactions on living bodies in 3D

### PHYSIOLOGY SIMULATION

- Interactively learn human bodies function through visualizing physiological reactions
- Improves cardiology knowledge through heart motion and blood circulation simulation

### PATHOLOGY EXAMINATION

- Understand pathological effects on human anatomy
- Visualize comparative anatomy to identify anatomical abnormalities caused by pathology

### Lecture

- Experience dynamic lectures through connecting the 3D Anatomix Table with projectors
- Assist instructors in providing 3D visual references for human anatomy and physiology concepts
- Improve classroom collaborations by screenshotting and sharing Table's content with students

### Learning Assist

- Assess comprehension of anatomical systems, structures, and concepts through Quizzing tools and reduce time to create examinations
- Facilitate an engaging learning environment where students can assess each other's knowledge

## Part 1



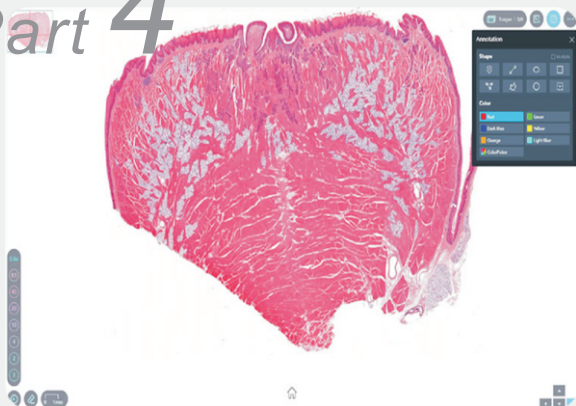
## Part 2



## Part 3



## Part 4



## 3D Normal Anatomy

1,200+ high-definition 3D models that can be disassembled and displayed independently, with detailed introductions and audio explanations; categorized into local anatomy, systematic anatomy, overall anatomy, and anatomy exercises.

## 3D Pathology

21 pathology classifications, 1,800+ 3D anatomical models of common human diseases, assisted by blood flow animation, oxygen exchange animation, and joint movement animation, make teaching come to life.

## Anatomy Video

Real-life autopsy videos with text and audio explanations; includes Head, Neck, Back, Upper Limb, Thorax, Abdomen, Pelvis & Perineum, Lower Limb, Variations.

## Micro Anatomy

High-definition histology section library, up to 40 times magnification is still very clear, picture automatic navigation, measurement, labeling and other functions.

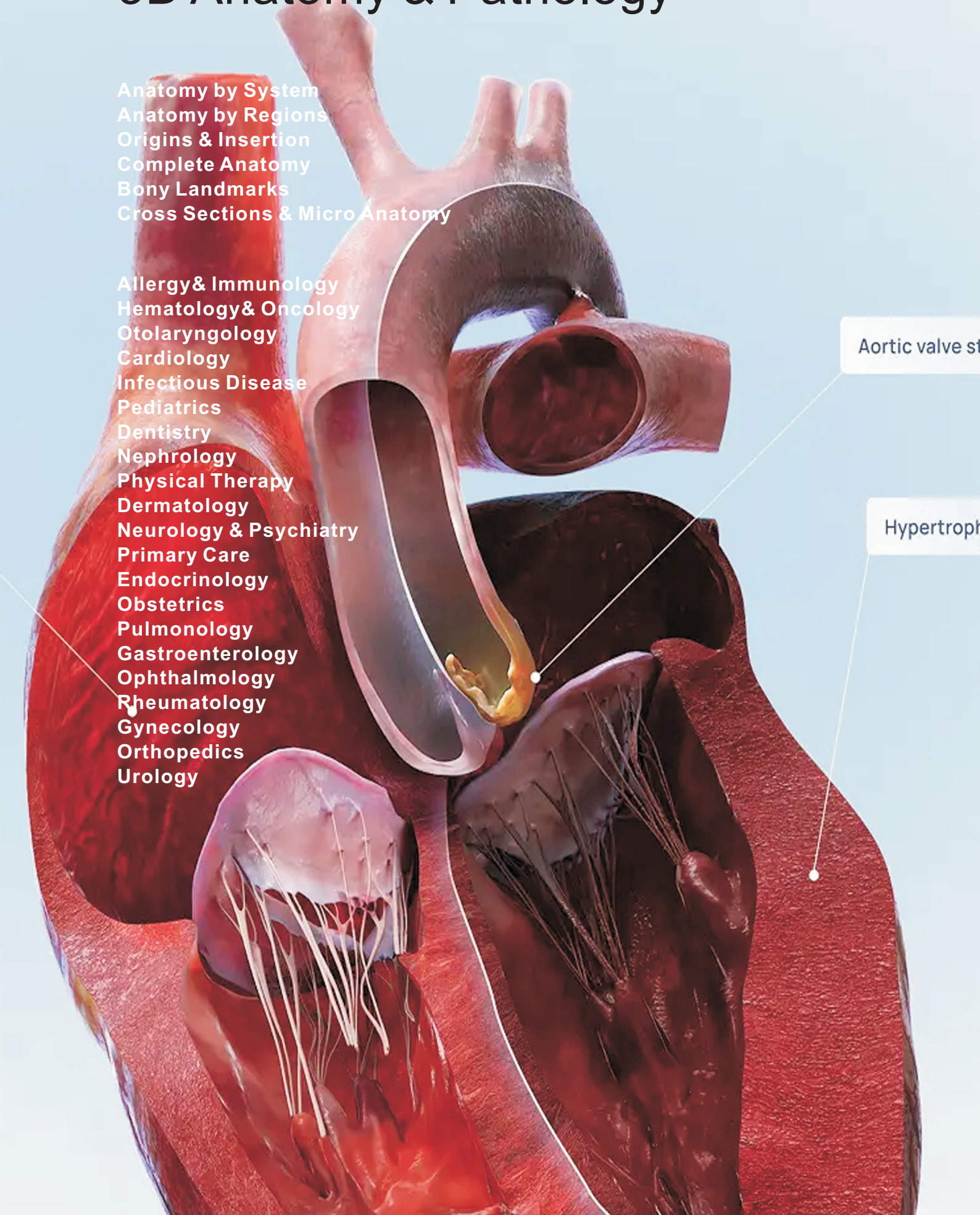
# 3D Anatomy & Pathology

Anatomy by System  
Anatomy by Regions  
Origins & Insertion  
Complete Anatomy  
Bony Landmarks  
Cross Sections & Micro Anatomy

Allergy & Immunology  
Hematology & Oncology  
Otolaryngology  
Cardiology  
Infectious Disease  
Pediatrics  
Dentistry  
Nephrology  
Physical Therapy  
Dermatology  
Neurology & Psychiatry  
Primary Care  
Endocrinology  
Obstetrics  
Pulmonology  
Gastroenterology  
Ophthalmology  
Rheumatology  
Gynecology  
Orthopedics  
Urology

Aortic valve st

Hypertroph

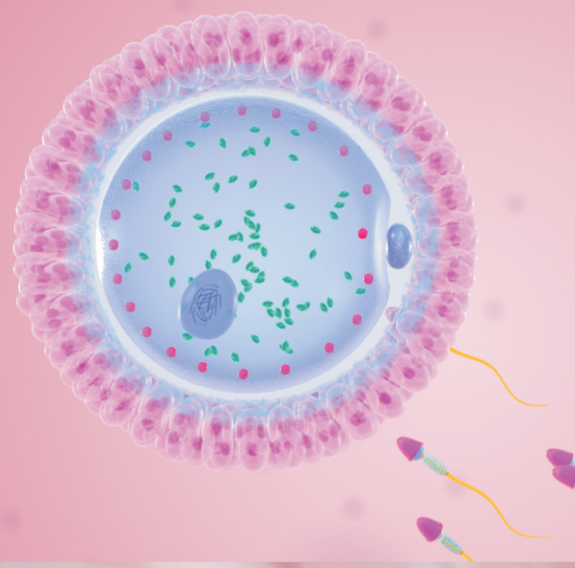
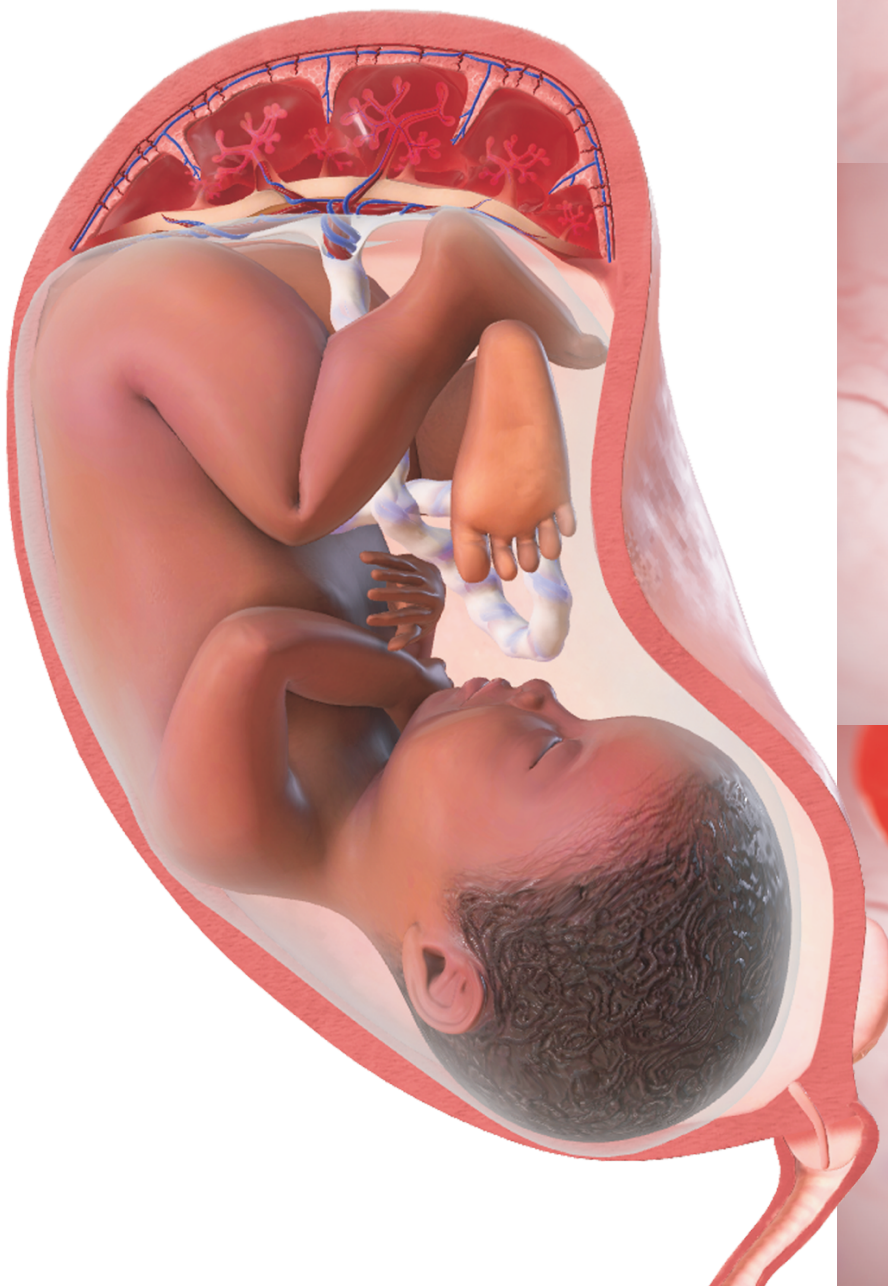


# FetalDevelopment

Explore human embryonic development by interacting with a 31-week fetus scan positioned within the uterus of a pregnant woman's body.

Visualize and interact with the fetus scan to better understand the anatomical structures of a developing fetus.

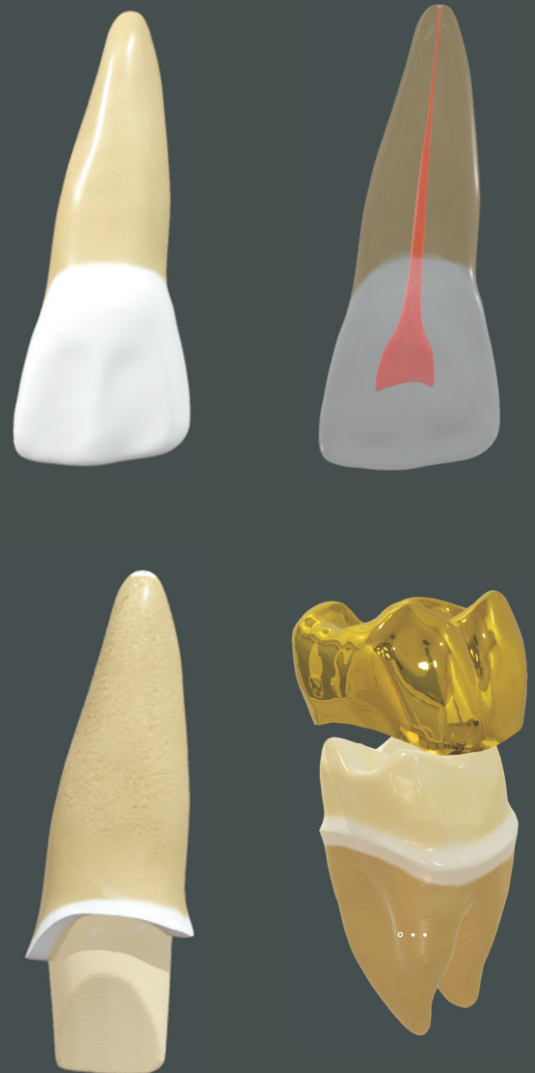
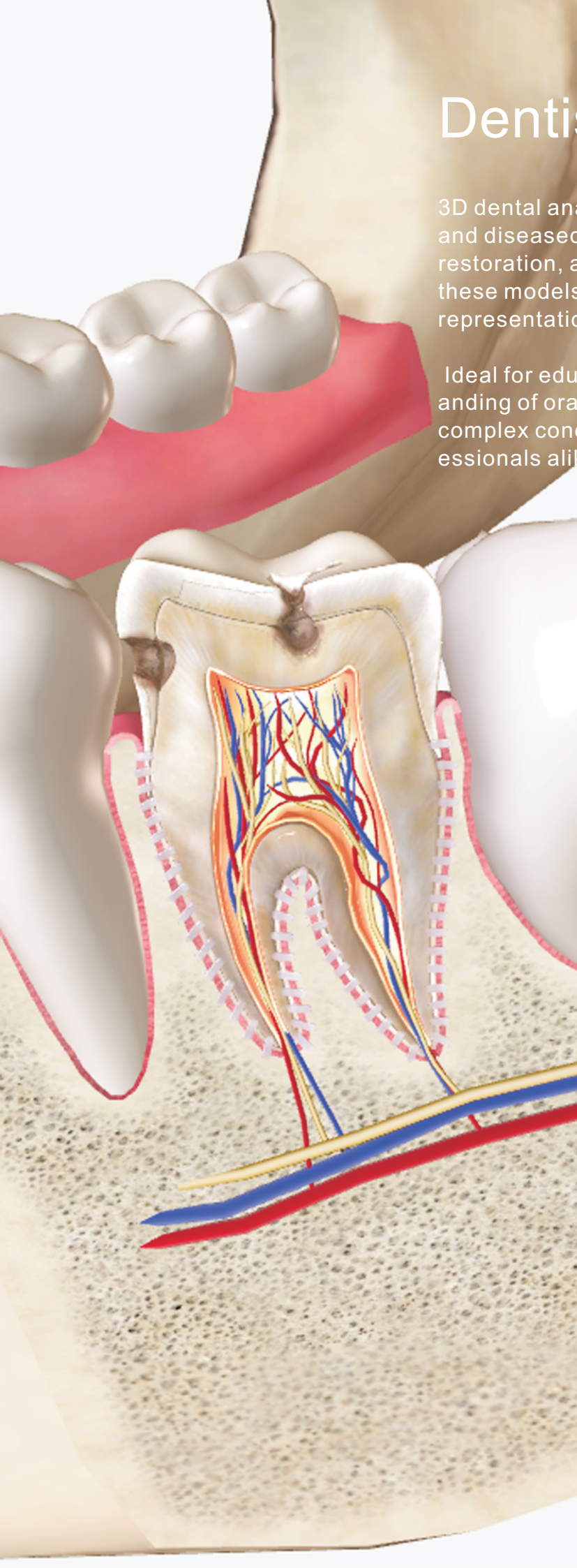
Simulate blood exchange between the mother and the fetus to gain insights into uteroplacental circulation.

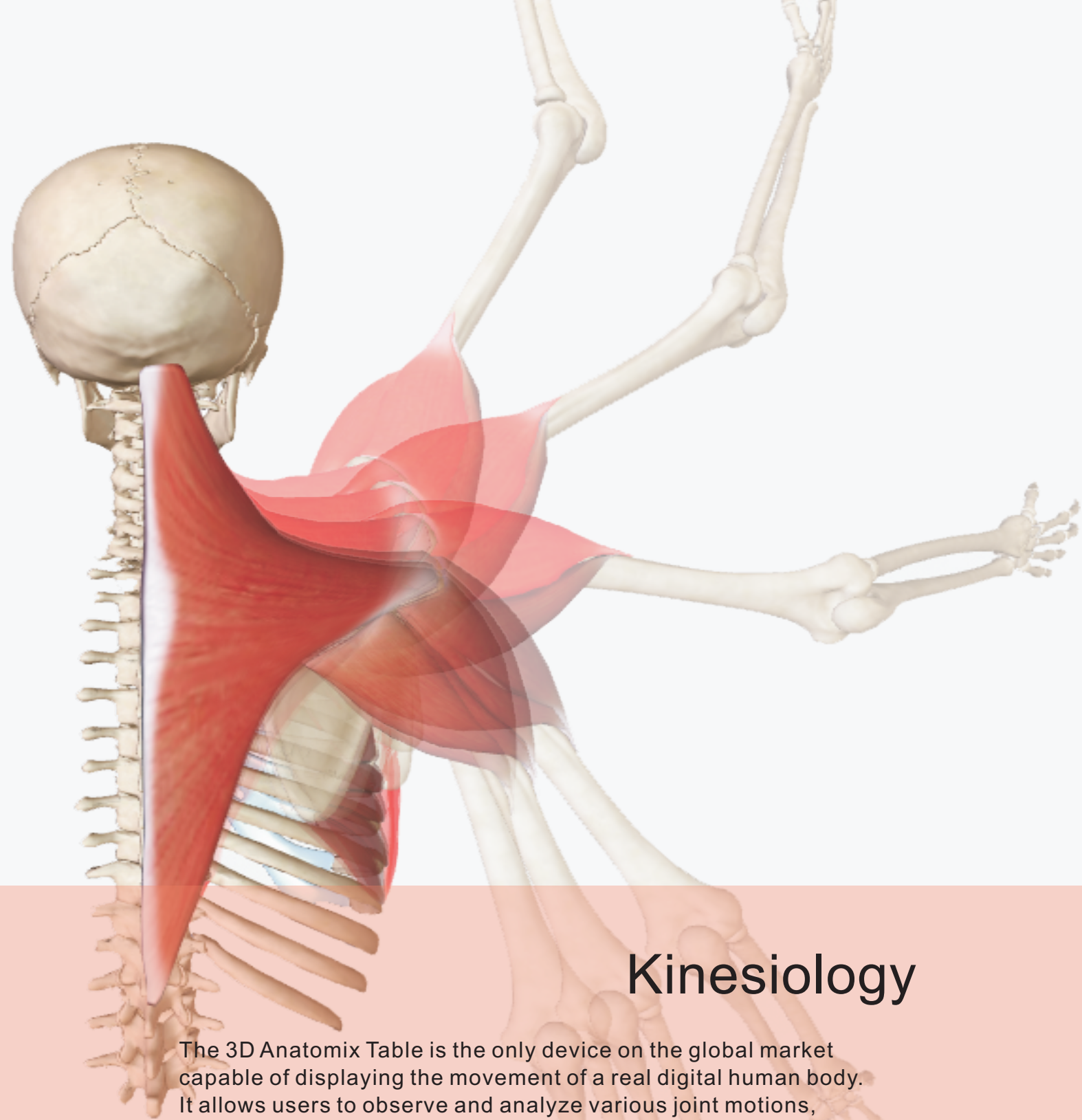


# Dentistry

3D dental anatomy teaching models showcase healthy and diseased teeth, root canal treatments, denture restoration, and more. Utilizing advanced 3D technology, these models provide detailed, accurate, and interactive representations of dental structures and procedures.

Ideal for education and training, they enhance understanding of oral health and treatment techniques, making complex concepts easier to grasp for students and professionals alike.



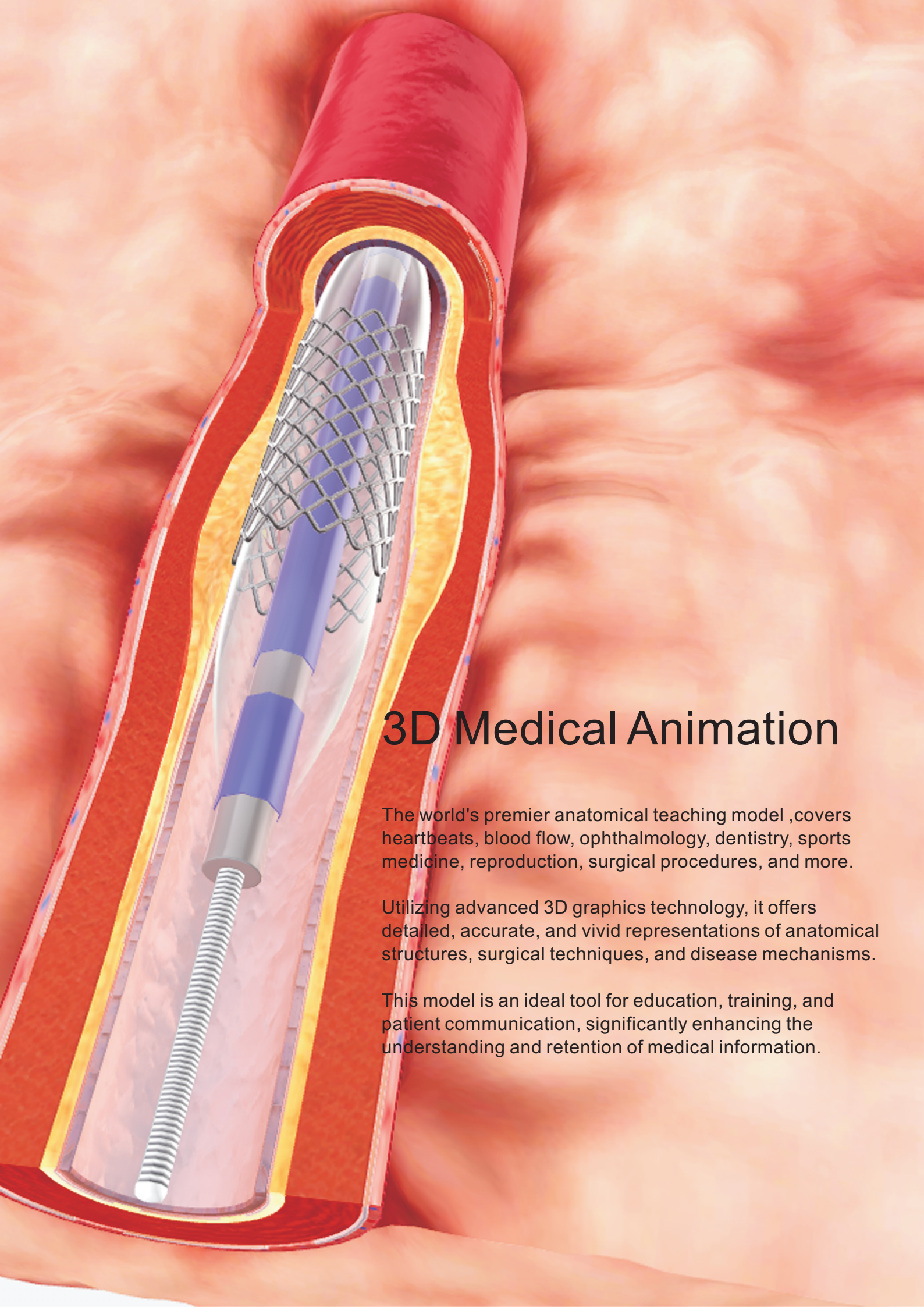


# Kinesiology

The 3D Anatomix Table is the only device on the global market capable of displaying the movement of a real digital human body. It allows users to observe and analyze various joint motions, such as ankle extension, ankle sprains, shoulder lifting and rotation, back pain, Achilles tendon tears, fist clenching, and ankle twists.

With this technology, the structures involved in each joint movement can be easily identified, including muscle contractions and tendon actions. This enables in-depth behavioral analysis to enhance understanding of human anatomy and biomechanics.

These features make the 3D Anatomix Table a perfect digital integration tool for any sports science, medical education, or rehabilitation program, providing an immersive and interactive learning experience.



## 3D Medical Animation

The world's premier anatomical teaching model ,covers heartbeats, blood flow, ophthalmology, dentistry, sports medicine, reproduction, surgical procedures, and more.

Utilizing advanced 3D graphics technology, it offers detailed, accurate, and vivid representations of anatomical structures, surgical techniques, and disease mechanisms.

This model is an ideal tool for education, training, and patient communication, significantly enhancing the understanding and retention of medical information.



# Micro Anatomy

Examine microscopic tissue structures and cell-specific biomarkers from a collection of accurately stained digital scans.

## Annotation



### Shape

☐ Multiple



### Color



Red



Green



Dark Blue



Yellow



Orange



Light Blue



ColorPicker



0.1x

1:1

40

20

10

4

2

1



0

8mm

# Hardware Specs



## Classic

---

### Product Dimensions

Length: 220 cm

Height: 140 cm

Width: 145 cm

### Weight

194.5 kg

### Display Size

86"

### Power Supply

AC 100-250V, 50V60 Hz, 10A

### Socket

USB, HDMI, VGA, RJ45



## Mini

---

### Product Dimensions

Length: 97 cm

Height: 115 cm

Width: 54 cm

### Weight

41 kg

### Display Size

43"

### Power Supply

AC 100-250V, 50V60 Hz, 10A

### Socket

USB, HDMI, VGA, RJ45



## RAT

---

### Product Dimensions

Length: 229 cm

Height: 89 cm

Width: 78 cm

### Weight

210 kg

### Display Size

88"

### Power Supply

AC 100-250V, 50V60 Hz, 10A

### Socket

USB, HDMI, VGA, RJ45

Guangzhou City, Guangdong Province, China

Phone: +86 13798023987

WeChat: k13798023987

[www.3danatomix.com](http://www.3danatomix.com) | [anatomytable@gmail.com](mailto:anatomytable@gmail.com)



3D Anatomix



Scan the QR code to see more